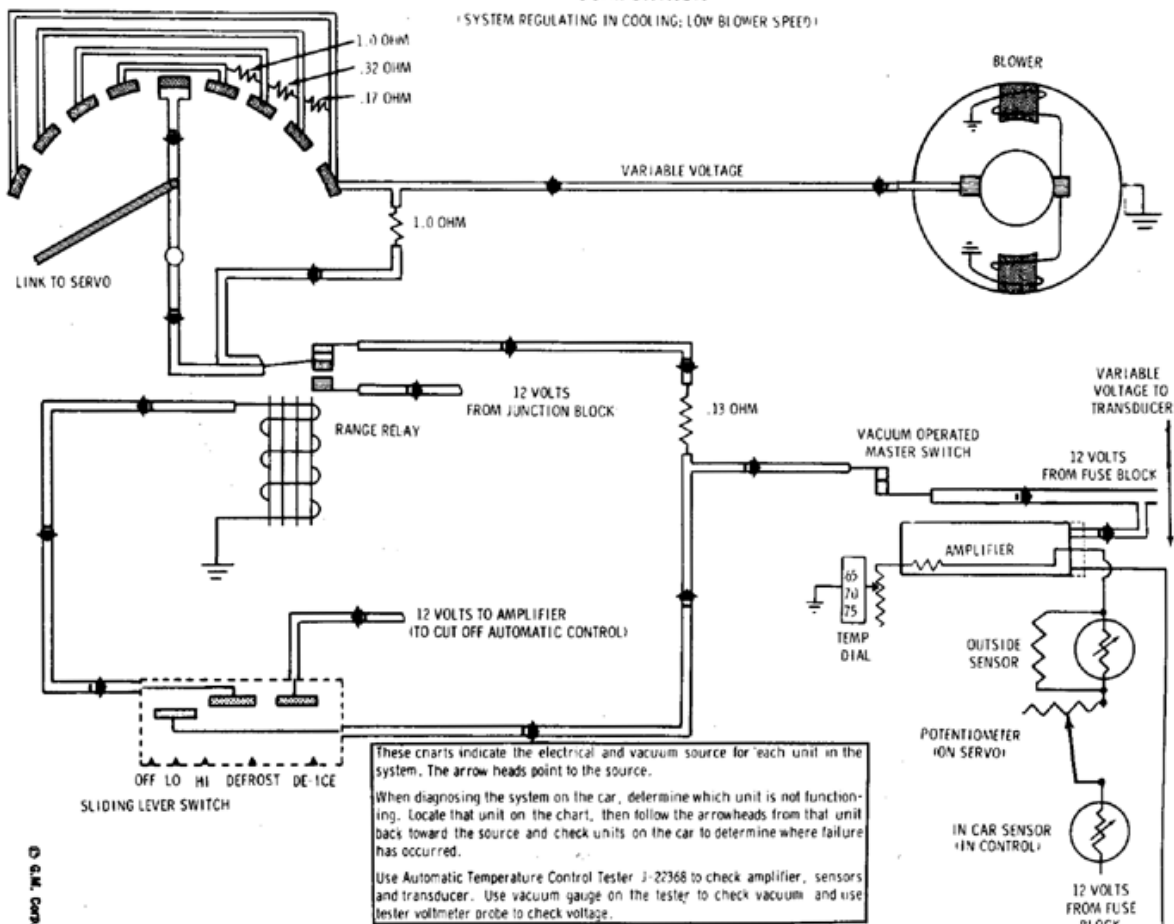


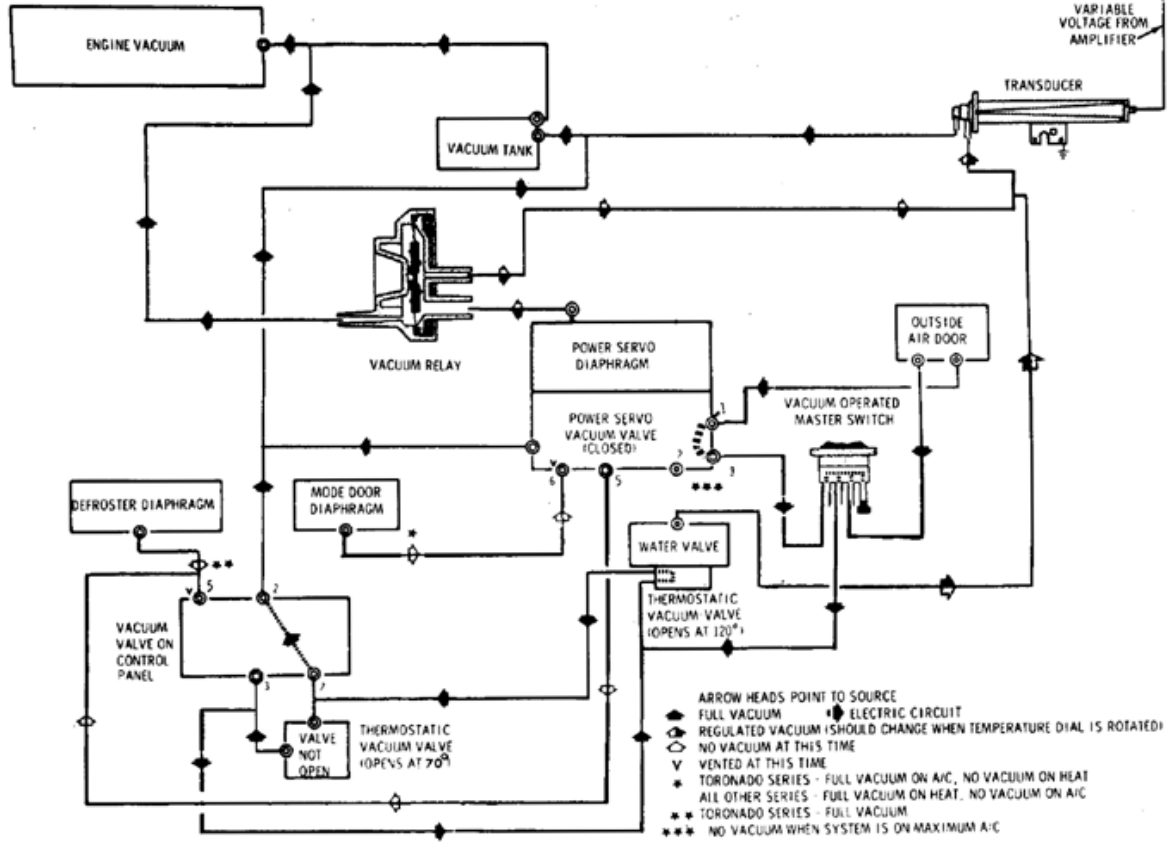
# COMFORTRON

(SYSTEM REGULATING IN COOLING; LOW BLOWER SPEED)



These charts indicate the electrical and vacuum source for each unit in the system. The arrow heads point to the source. When diagnosing the system on the car, determine which unit is not functioning. Locate that unit on the chart, then follow the arrowheads from that unit back toward the source and check units on the car to determine where failure has occurred. Use Automatic Temperature Control Tester J-27368 to check amplifier, sensors and transducer. Use vacuum gauge on the tester to check vacuum and use tester voltmeter probe to check voltage.

GM Corp.



- FULL VACUUM
- ◐ REGULATED VACUUM (SHOULD CHANGE WHEN TEMPERATURE DIAL IS ROTATED)
- NO VACUUM AT THIS TIME
- ∇ VENTED AT THIS TIME
- \* TORONADO SERIES - FULL VACUUM ON A/C, NO VACUUM ON HEAT
- ALL OTHER SERIES - FULL VACUUM ON HEAT, NO VACUUM ON A/C
- \*\* TORONADO SERIES - FULL VACUUM
- \*\*\* NO VACUUM WHEN SYSTEM IS ON MAXIMUM A/C
- ELECTRIC CIRCUIT

## 1968 Olds Cutlass/442/F-85 A/C & Heat (COMFORTRON)